

# **PRISMA**<sup>®</sup> **Impianti**



## **COMPANY PROFILE**

## SOLUTIONS

FOR END USERS AND  
MAIN CONTRACTORS



**PROCESS  
PRODUCTIVITY**



**SMART  
ANALYTICS**



**FUNCTIONAL  
SAFETY**

TRUST IN AUTOMATION  
**PRISMA**<sup>®</sup>  
Impianti



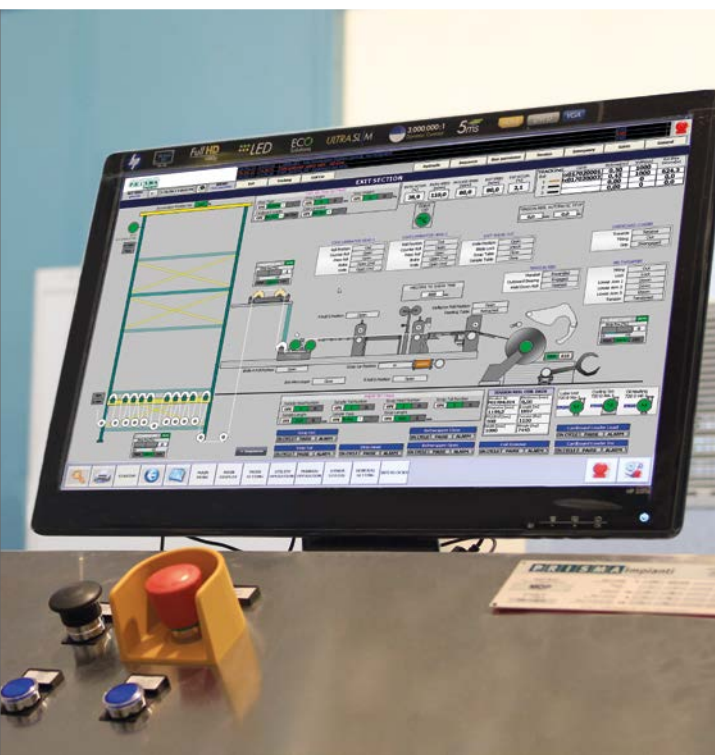
*Since 1980 PRISMA Impianti provides  
advanced process control systems  
with smart analytics, functional safety  
and cyber security features*



**ENERGY  
EFFICIENCY**



**CYBER  
SECURITY**





## MAIN INDUSTRIAL SECTORS

TRUST IN AUTOMATION

**PRISMA**<sup>®</sup>  
Impianti



ENERGY



ENVIRONMENT



MATERIAL HANDLING



TRANSPORTATION



*PRISMA Impianti  
provides solutions  
in many different  
sectors*



**METALS**



**CHEMICALS**



**OIL & GAS**



**AUTOMOTIVE & AEROSPACE**



**OTHER APPLICATIONS**



## SOLUTIONS & PACKAGES

### FOR END USERS



#### PRODUCTIVITY

We can improve the Productivity and Overall Equipment Efficiency (OEE) of your process through the reengineering of your production plants. Re-vamping the electrical and automation systems greatly reduces lead and cycle times and helps speed-up maintenance by replacing outdated technologies.

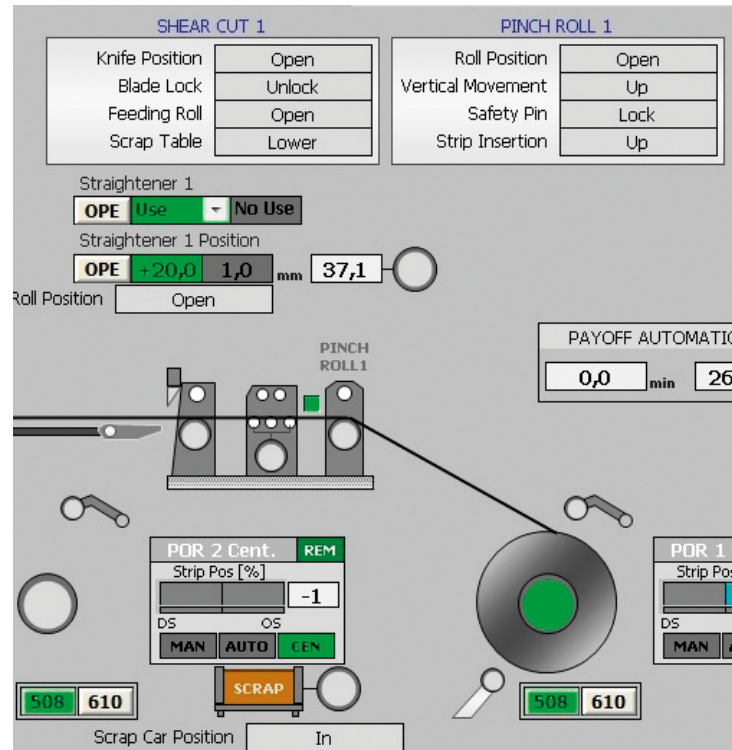
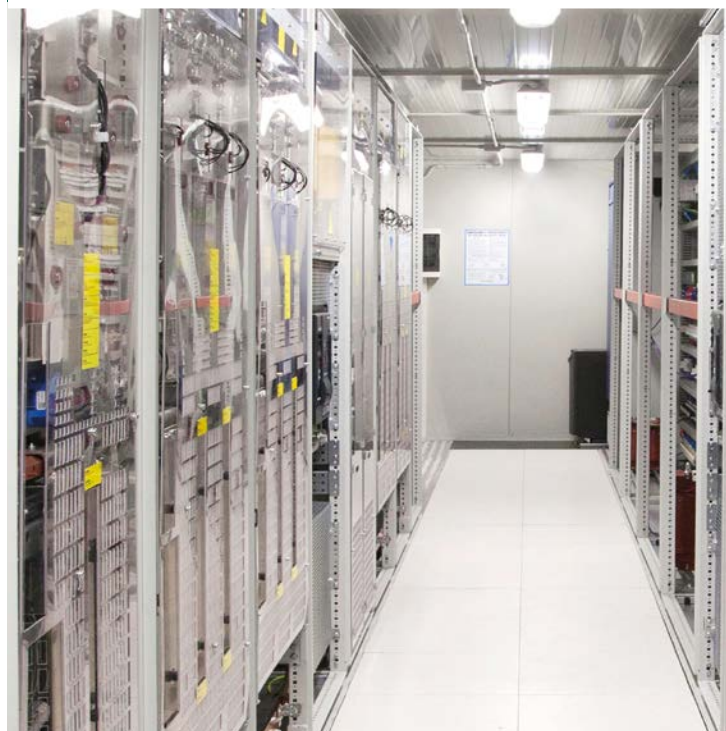


#### SMART ANALYTICS

Smart Analytics are a more immediate and convenient solution to improve your production management. Our Manufacturing Operations Management (MOM) solution features material and warehouse management, production scheduling and optimization, real-time tracking, quality control, data storage and analysis, KPI and reports. The system is mobile-friendly and can be combined with our cyber security suite SEC.R.A.® for safe remote access.

TRUST IN AUTOMATION

**PRISMA**  
Impianti



*We optimize your production process  
with references in multiple industries  
around the world*



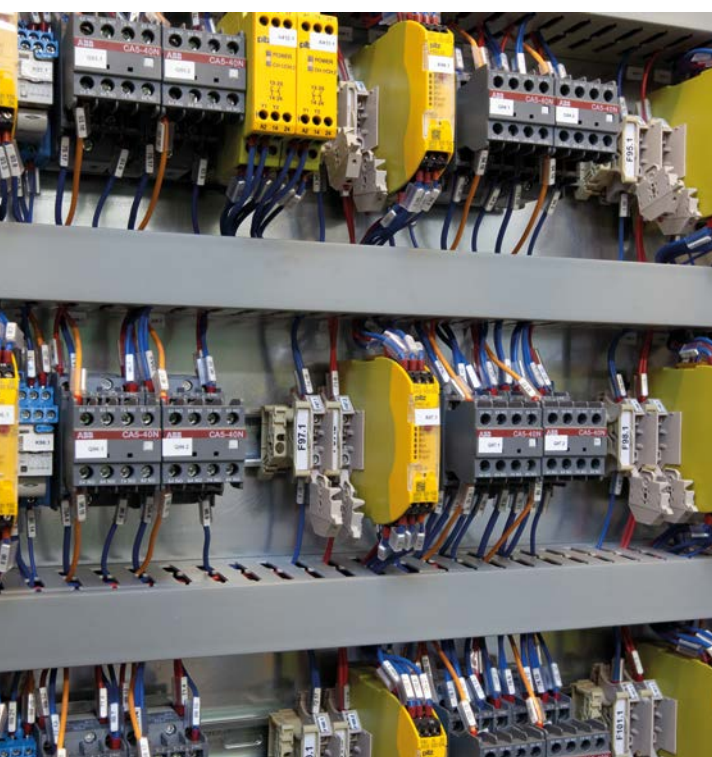
## ENERGY EFFICIENCY

Energy Efficiency can be an important competitive advantage. With our vast expertise with drives and process control, we can optimize energy consumption. We also have specific solutions for Energy Monitoring & Control Systems (EMCS), a critical element of a modern substation.



## FUNCTIONAL SAFETY

We have experience with Safety Integrity Levels up to SIL 3 and Performance Levels up to Pld. We perform Process Hazard & Risk Analysis (HAZOP, FMEA, FTA, RAMS), design Integrated Control & Safety Systems (ICSS), Fire&Gas and Emergency Shutdown Systems (ESD), certifying the supply according to the related safety standards.





## SOLUTIONS & PACKAGES

### MAIN CONTRACTORS



#### E&C PACKAGES

We can make it easier to design and commission your plants and machines, developing for you the electrical and automation systems. We can offer a complete package, including basic and detailed engineering, related procurement, control panels manufacturing, erection supervision and commissioning - or just one of these services, e.g. site assistance.

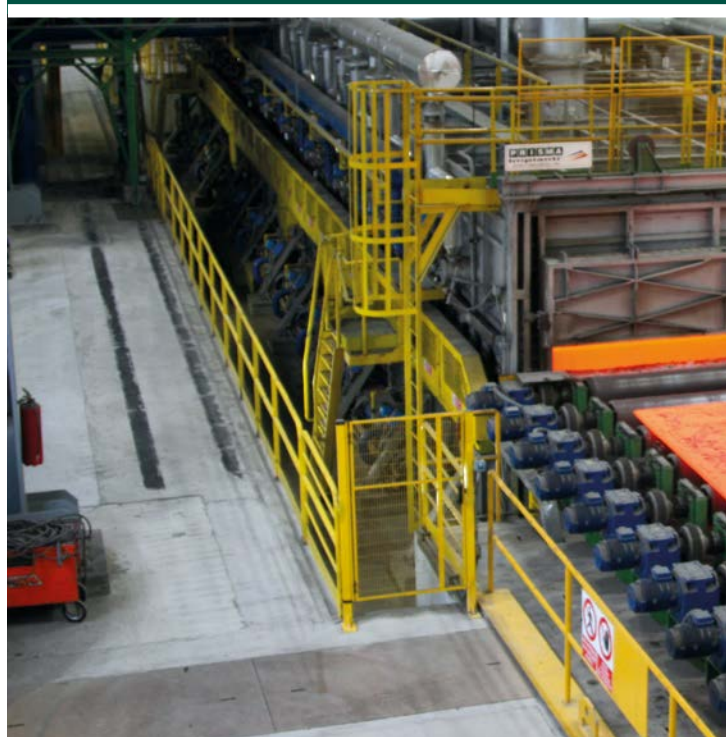


#### SKIDS, SHELTERS & RTUS

Our equipment can fit on skids or inside a shelter, suitable even for the harshest environments (marine, tropical, desert or subarctic areas). Custom-designed by our engineers, these solutions are also an interesting alternative inside manufacturing facilities, thanks to their extremely reduced startup times.

TRUST IN AUTOMATION

**PRISMA**  
Impianti



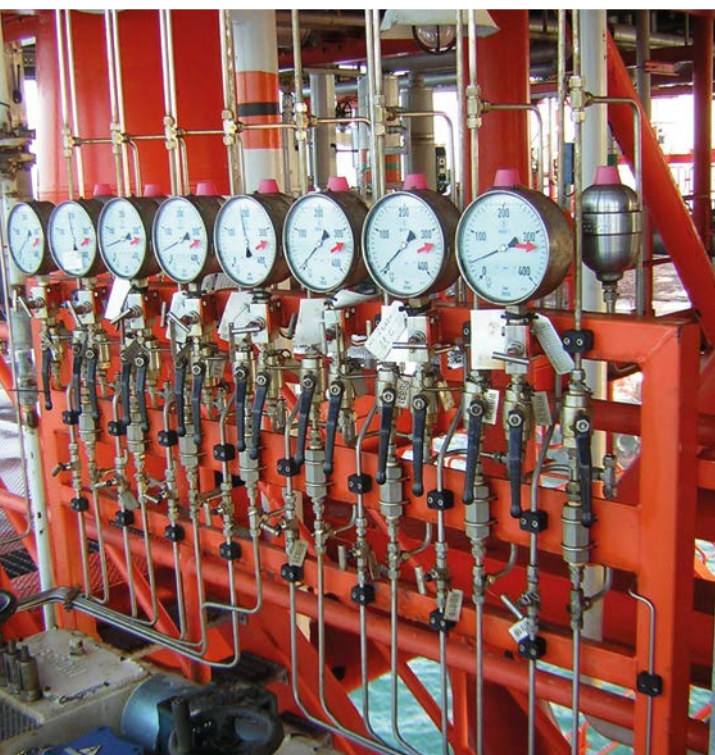


*We are the reliable partner for EPCs and OEMs, supporting you from the bid to the startup of the project*



## **COMBUSTION SYSTEMS**

Equipping your plant with a modern Burner Management System (BMS) can significantly improve the energy efficiency and the quality of the end product. pxFLAM™ is our solution to manage industrial furnaces with a mathematical model able to meet these expectations. With our engineering capabilities on industrial furnaces, we are also able to provide a turn-key service, taking full responsibility for the electrical and automation package.



## WORKFLOW

TRUST IN AUTOMATION  
**PRISMA**<sup>®</sup>  
Impianti



### ENGINEERING

- Basic engineering (BED & FEED)
- Hazop & FMEA
- Feasibility studies & cost estimations



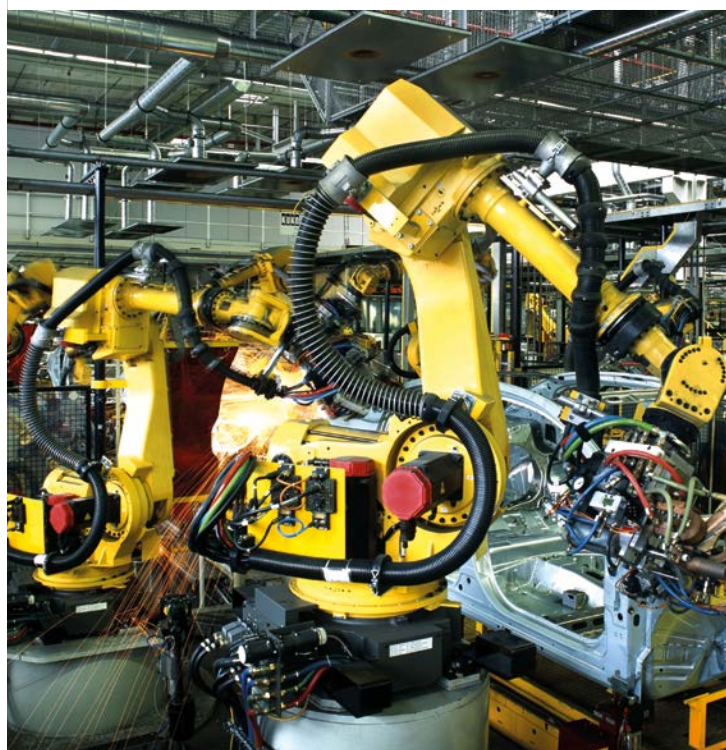
### DETAILED ENGINEERING

- Electrical design
- Instrumentation design
- Mechanical, P&I design
- Software development



### CONSTRUCTION

- Control & Distribution Panels (CE/UL/CSA markings)
- Shelter assembly
- Site management & erection supervision





*We provide solutions for mechanical,  
electrical and automation systems up  
to entire turn-key plants*



## PROCUREMENTS & LOGISTICS

- Supply of equipment
- Packaging and transportation



## TESTING & COMMISSIONING

- FAT testing
- SAT testing
- Commissioning & start-up assistance



## SERVICE

- On site and remote maintenance of automation systems

# PRODUCTS & SOLUTIONS

TRUST IN AUTOMATION  
**PRISMA**<sup>®</sup>  
Impianti

## BASIC AND DETAILED ENGINEERING

## PROCUREMENT AND LOGISTICS DISTRIBUTION BOARDS

- Power distribution boards LV/MV
- Drives boards, inverter and MCC

## CONTROL BOARDS

- PLC, DCS
- Special boards for ATEX areas
- Boards with UL/CSA/NEMA marking

## SOFTWARE FOR PROCESS CONTROL

- Software PLC & DCS, HMI & SCADA
- Risk Analysis
- Software for Safety Control Systems (ESD, F&G, ICSS)

## SOFTWARE IT

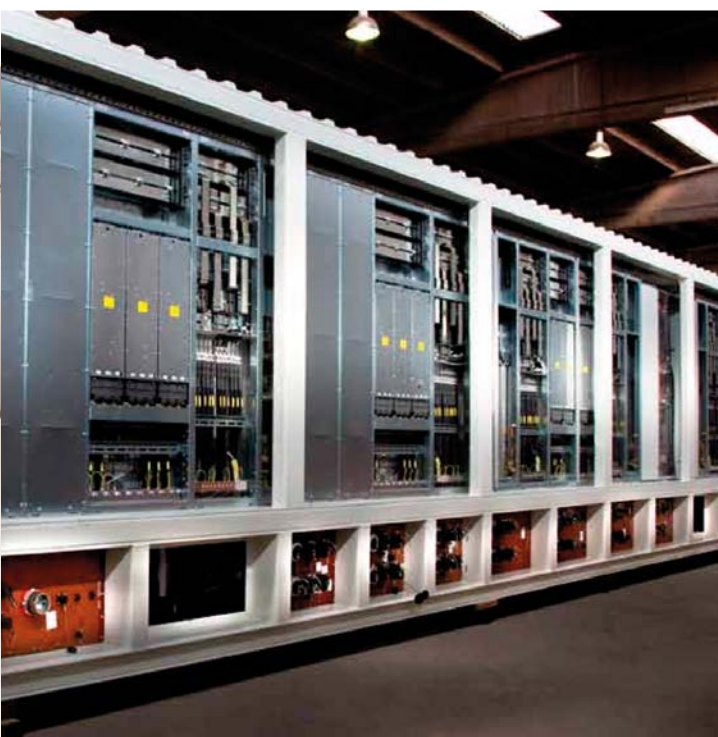
- Manufacturing Operations Management (MOM)
- Tailor-made Apps
- Cyber security (suite SEC.R.A.<sup>®</sup>)

## TESTING, COMMISSIONING AND SERVICE





*We help you to improve Process  
Productivity and Energy Efficiency*



## **PREFABRICATED POWER & CONTROL ROOMS (PCRS)**

- Shelter for marine environments and resistant to vibrations (e.g. harbor cranes)
- Shelter for telecommunications and RTU for pipelines, also off-grid solutions
- Power & control room

## **FUNCTIONAL SAFETY**

- Risk Analysis
- Functional Safety modernization
- CE certification of entire production lines

## **MECHANICAL DESIGN AND FABRICATION**

- Industrial furnaces
- Mechanical and process engineering of other machines



## **ROBOTICS**

- Robots integration
- Marking systems
- Handling/palletizing systems
- AGVs and Automatic Warehouses

## **INTELLECTUAL PROPERTIES**

- pxFLAM™ burner management system (BMS)
- pxSPEED™ process line speed control
- pxCOAT™ closed-loop coating thickness control
- pxTORQUE™ strip tension control
- pxDIAM™ coil diameter real-time control
- pxDEEP™ IP68 control submersible solution (RTU)

## OUR PROMISE

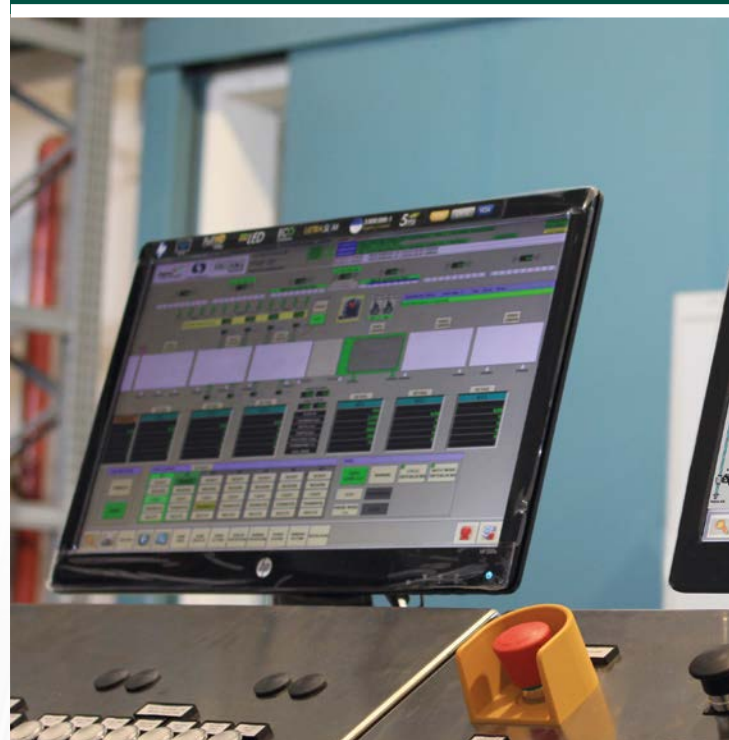


### INSIGHT SELLING

Knowing our business since 1980, we can suggest diverse, state-of-the-art devices and system philosophies. Let's design together the best solution for your problem: it will be a pleasure for us to assume the responsibility for the implementation.

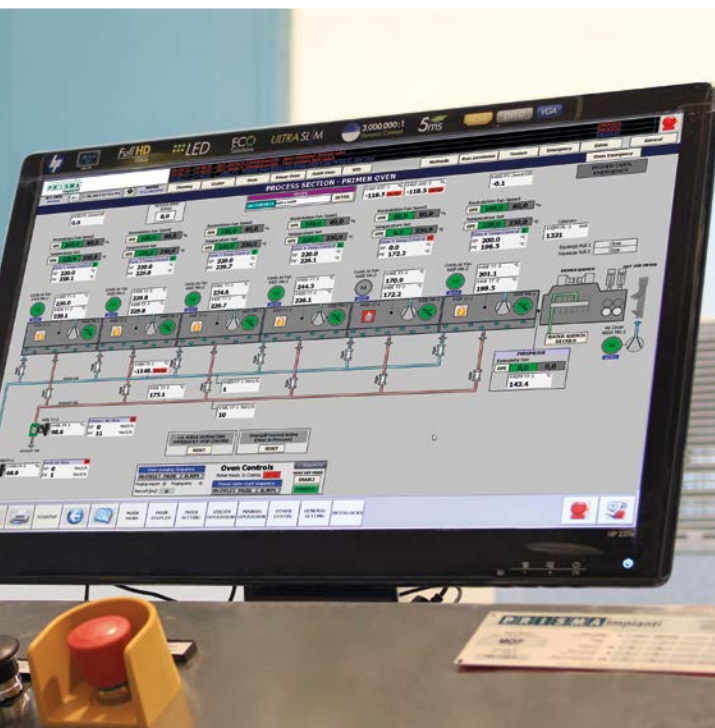
TRUST IN AUTOMATION

**PRISMA**<sup>®</sup>  
Impianti





*PRISMA Impianti is a leading supplier of turn-key plants particularly in the field of Automation Systems*



## THE INTEGRATOR EXPERIENCE

We are a system integrator, not a manufacturer: we will not try to sell you equipment you don't necessarily need. We are appreciated for revamp-ing existing plants because we are often able to change your process without changing the machineries.



## YOU ARE OUR STANDARD

We do not work on rigid standards: we always try and adapt to you. If you have your own procedures, design philosophies and templates we will follow them. Let's hear your requirements and we will build on them: it's the automation that adapts to you, never the opposite.

## OUR PROMISE

TRUST IN AUTOMATION  
**PRISMA**<sup>®</sup>  
Impianti



### THE RIGHT TO CHANGE

Completing a project takes time; meanwhile, market conditions change, requirements and technologies have to be permanently updated, production is rescheduled. We will always be ready to discuss modifications from your side at later stages of the project, should you need to do so.



### OUR EXPERIENCE AT YOUR SERVICE

We provide turn-key plants with a strong emphasis on field engineering and installation - one of the most critical aspects of our job, which often causes unforeseen events and delays. That's why the commissioning is carried out by the same engineers that designed the system.





*Thanks to the extensive know-how  
PRISMA Impianti has become a leader  
in revamping existing plants*



## **NO LOCK-IN, NO WALLED GARDENS**

We understand that usually our supply is part of a broader system. That's why we consistently use market components and give you access to the automation software. This will let you fine-tune your process for the years to come, offsetting to a certain degree mechanical wear.



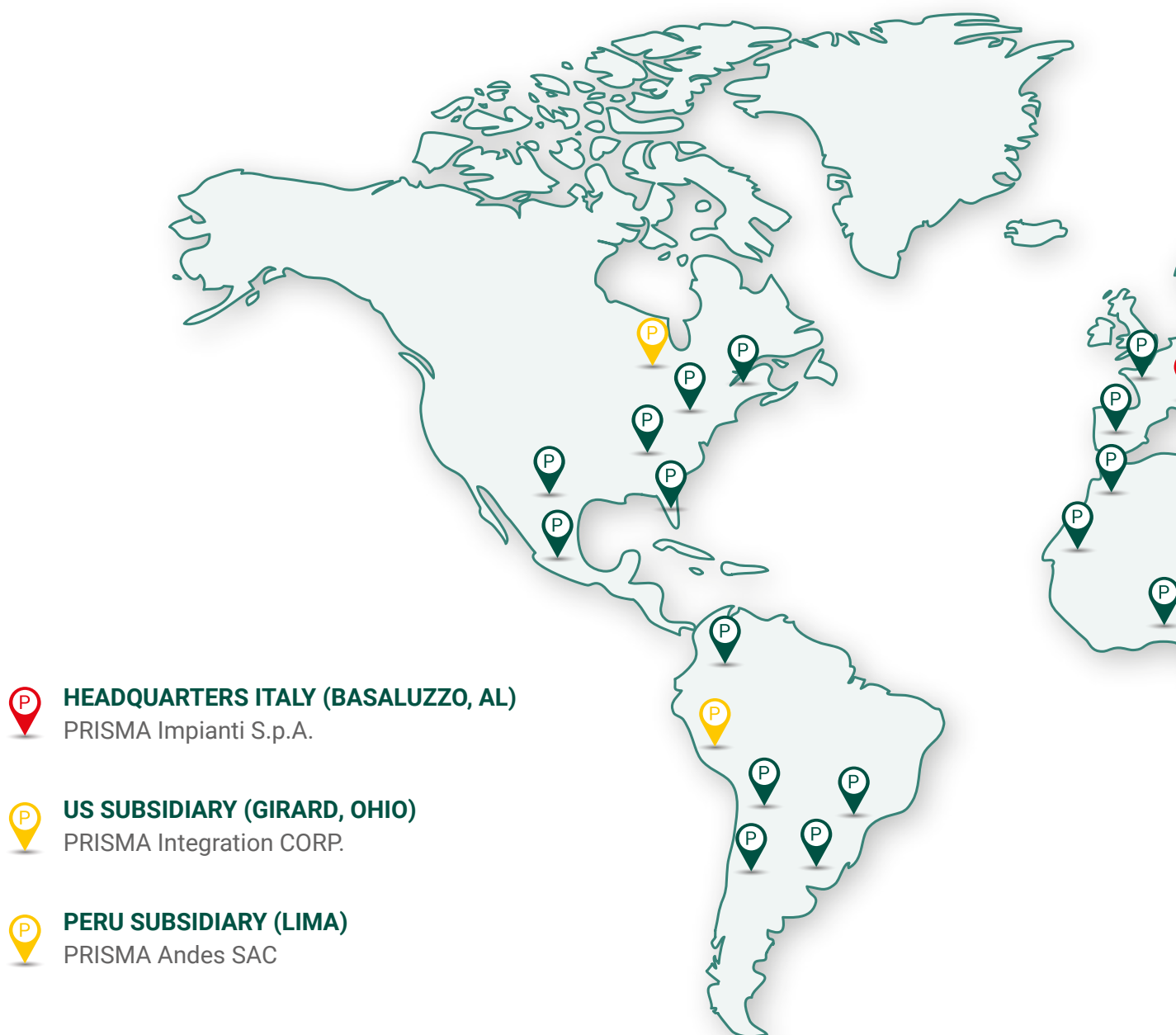
## **AFTER SALES SERVICE**

"No Lock-in" does not mean we forget about your project once startup is done. Whenever you need, we are available online and on-site, with the same engineers that developed and commissioned the project.

## OFFICES & REFERENCES

TRUST IN AUTOMATION

**PRISMA**<sup>®</sup>  
Impianti





*Our team has successfully developed  
complex projects in more than  
50 countries around the world*



## ABOUT US



In the late '70s Valerio Eugenio Alfonso decided to quit his job as a site manager.

He founded our company in 1980, striving to achieve both technical excellence and high standard of service and flexibility.

Today PRISMA Impianti works all over the world, across industries and cultures, but we never forget our roots and values.



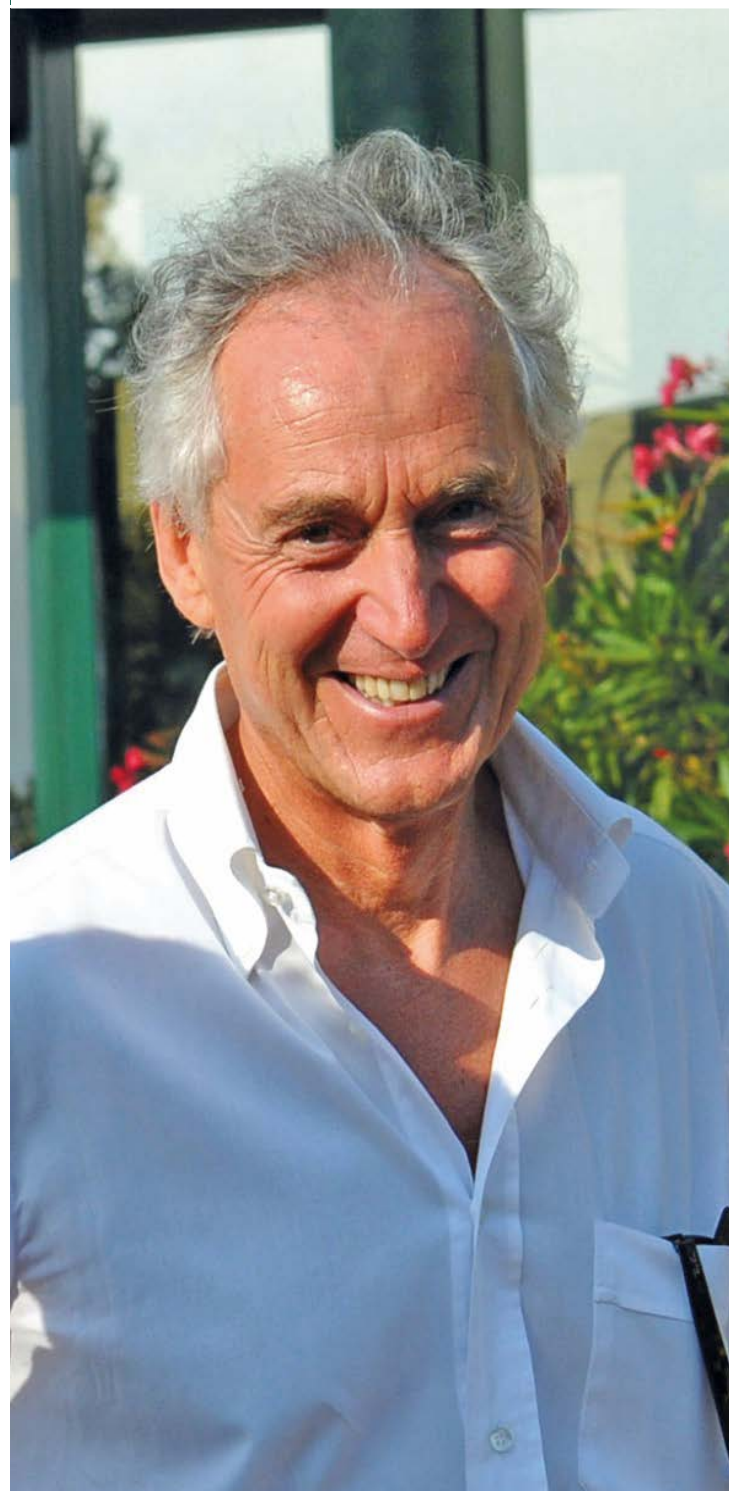
### **SAME 1980**

The first core of the company, SAME, is founded as an electrical erection and maintenance contractor.



### **PRISMA 1987**

A new generation of engineers sparks the creation of PRISMA Automazione, that focuses on engineering and process control.





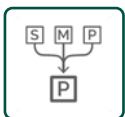
*"I have always believed  
Automation would be the future"*

*Valerio Eugenio Alfonso*



### **MECART 1988**

To complete a turn-key offer, Valerio Eugenio Alfonso and other partners founded MECART, a mechanical engineering and erection company.



### **MERGING 1999**

The group becomes one company under the name of PRISMA Impianti, moving the headquarters to the current location in a completely new facility.



### **HANDOVER 2011**

Valerio Eugenio Alfonso remains as the President and largest shareholder while his son Manuel Alfonso becomes CEO, to lead our company towards new exciting challenges.



### **PRISMA INTEGRATION 2018**

PRISMA acquires assets of Premier Integration LLC, located in Ohio (USA).



### **PRISMA ANDES 2019**

PRISMA opens a new subsidiary in Peru.

## CERTIFICATIONS AND ETHICS

TRUST IN AUTOMATION  
**PRISMA**<sup>®</sup>  
Impianti



**ISO 9001**



**ISO 14001**



**ISO 45001**

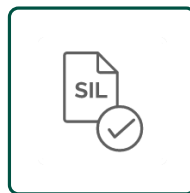


**UL/CSA MARKING**





*PRISMA Impianti has been awarded  
certifications in most of its business areas  
including functional safety*



**FUNCTIONAL  
SAFETY ENGINEERS**



**MACHINE SAFETY  
ENGINEERS**



**AEO-F / C-TPAT**

## CONTACT US

TRUST IN AUTOMATION

**PRISMA**<sup>®</sup>  
Impianti



### PRISMA Impianti S.p.A.



Via Asti 7  
15060 Basaluzzo (AL) - Italy  
T. +39 0143.48.98.91  
[sales@prismagroup.it](mailto:sales@prismagroup.it)

[www.prismagroup.it](http://www.prismagroup.it)

### PRISMA Integration Corp.



50 Harry St.  
Girard, Ohio 44420 - USA  
T. +1 330.545.8690  
[info@prismaintegration.com](mailto:info@prismaintegration.com)

[www.prismaintegration.com](http://www.prismaintegration.com)

### PRISMA Andes SAC



Av. El Polo Nr. 405, Int. 712  
15023 Santiago de Surco, Lima - Peru  
T. +51 (1) 771.6077  
[ventas@prismagroup.it](mailto:ventas@prismagroup.it)

[www.prismagroup.it](http://www.prismagroup.it)